



Rop Cam^{SW-8000P}

Specifications

Fundus Image Resolution:

- Center field of view 30 LP/mm
- Middle field of view (22.5°) 20 LP/mm
- Edge field of view (45°) 15 LP/mm

Fundus imaging range:

- 130°

Camera:

- High resolution, High sensitivity, Medical grade CMOS.

Resolution:

- 4 Megapixels

Shooting method:

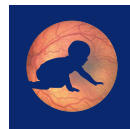
- Single, continuous shooting, Video mode.

Video image resolution and frame rate:

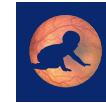
- Resolution: 2048x2048, 30fps.

Illumination Source:

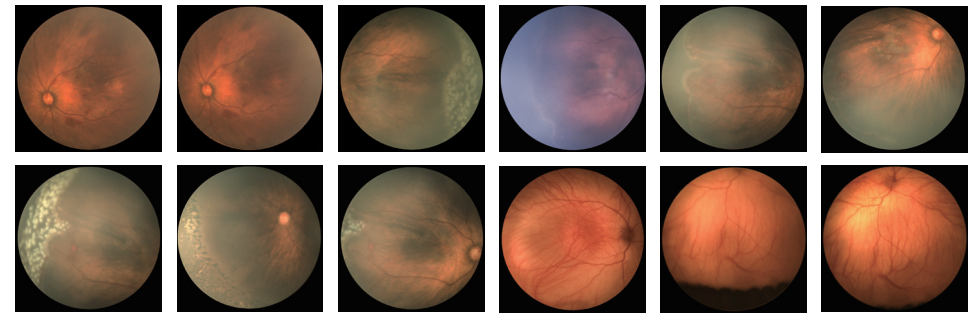
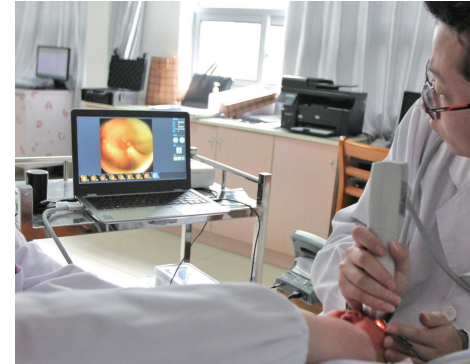
- New LED light source, wavelength is 480-700nm
- Harmful blue-light band was removed so there is no ultraviolet photochemistry damage and near infrared photothermic damage.
- The circular light field has uniform illumination, better for the image quality.
- Light source intensity 0 - 48000 Lux.
- Light source automatic protection
- Color rendering index (CRI) is not less than 85, color temperature is 2700K.
- Light source brightness adjustment: light source intensity is numerically displayed, 256 levels continuously adjustable.



Rop Cam^{SW-8000P}



Rop Cam^{SW-8000P}



Software system:

- Any two pictures can be printed side by side.
- Contrast, brightness, red, green and blue three-tone pitches adjustment.
- Annotations, markers, enlarged local lesions and management functions.

Database:

- Name, ID, date of birth, etc.
- It can classify and store examined patients by different kinds of patients and doctors according to their needs, encrypt and play back.
- Images and data can be imported and exported in separate batches.
- Local data storage and backup management.

Tianjin Suowei Electronic Technology Co., Ltd.

Address: 2nd Floor, E-1 Building, No. 6, Zhuyuan Road,
Huayuan Industrial Zone, Nankai District, Tianjin, China

Tel: +86-22-8371 2745

Fax: +86-22-8371 2645

Email: sales@suowei.com.cn